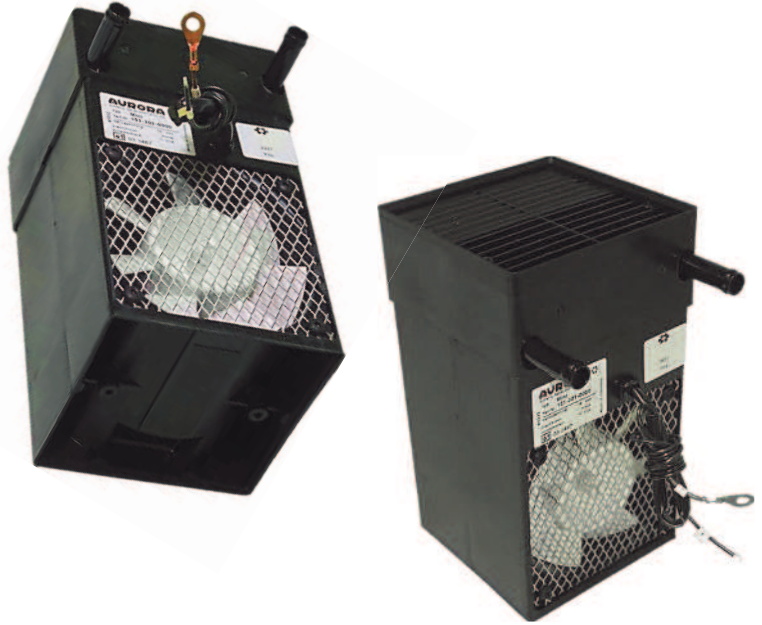


## Standard Heaters Mini H410

The Aurora Mini heater is perfectly designed to retrofit in cabs of nearly all applications. The 221mm by 124mm Mini is ideal for providing efficient heat to passengers and operators in areas where installation space is scarce. The Mini is also suited for a number of heating functions. Whether installed under the seat, mounted to a side wall, driver's space, door entries, sleeping cabins, on-board kitchens, or simply used as a defroster, the mini is perfect for the job.

Specifications	
Air Flow: 114 m <sup>3</sup> /h	
Heating Power: 2.1 kW	
Power Consumption: P <sub>el</sub> = 29 W	
Noise Emission: 64 dB(A)	
Technical Data	
912-100-0123	
Variations	
Part Number	Description
151-301-0000	Mini H410 12V
151-302-0000	Mini H410 24V



## Technical Drawing and Information

